



AMERICAN  
KENNEL CLUB®

## FSS OPEN SHOW CANINE ANATOMY EXAM

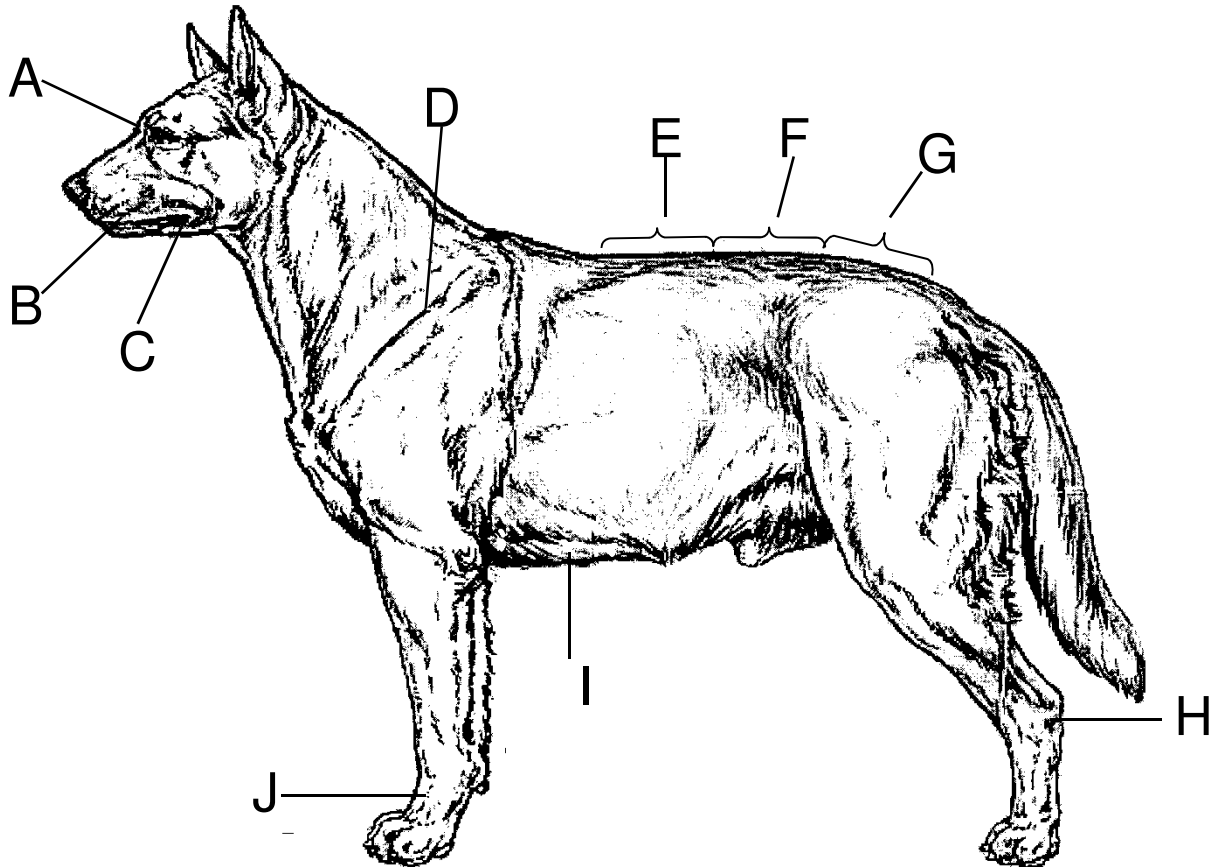
(4 Parts / 50 Questions) – Please mark your answers on your answer sheet and return that portion **ONLY**.  
**Do not mail test booklet.** All questions refer to terms which can be found in the The Complete Dog Book.

### PART I. – EXTERNAL FEATURES

---

Place the letter of the corresponding area next to the term that identifies it.

- |                        |                   |
|------------------------|-------------------|
| 1. Tarsus (hock) _____ | 6. Lip _____      |
| 2. Loin _____          | 7. Shoulder _____ |
| 3. Stop _____          | 8. Flew _____     |
| 4. Back _____          | 9. Croup _____    |
| 5. Brisket _____       | 10. Pastern _____ |

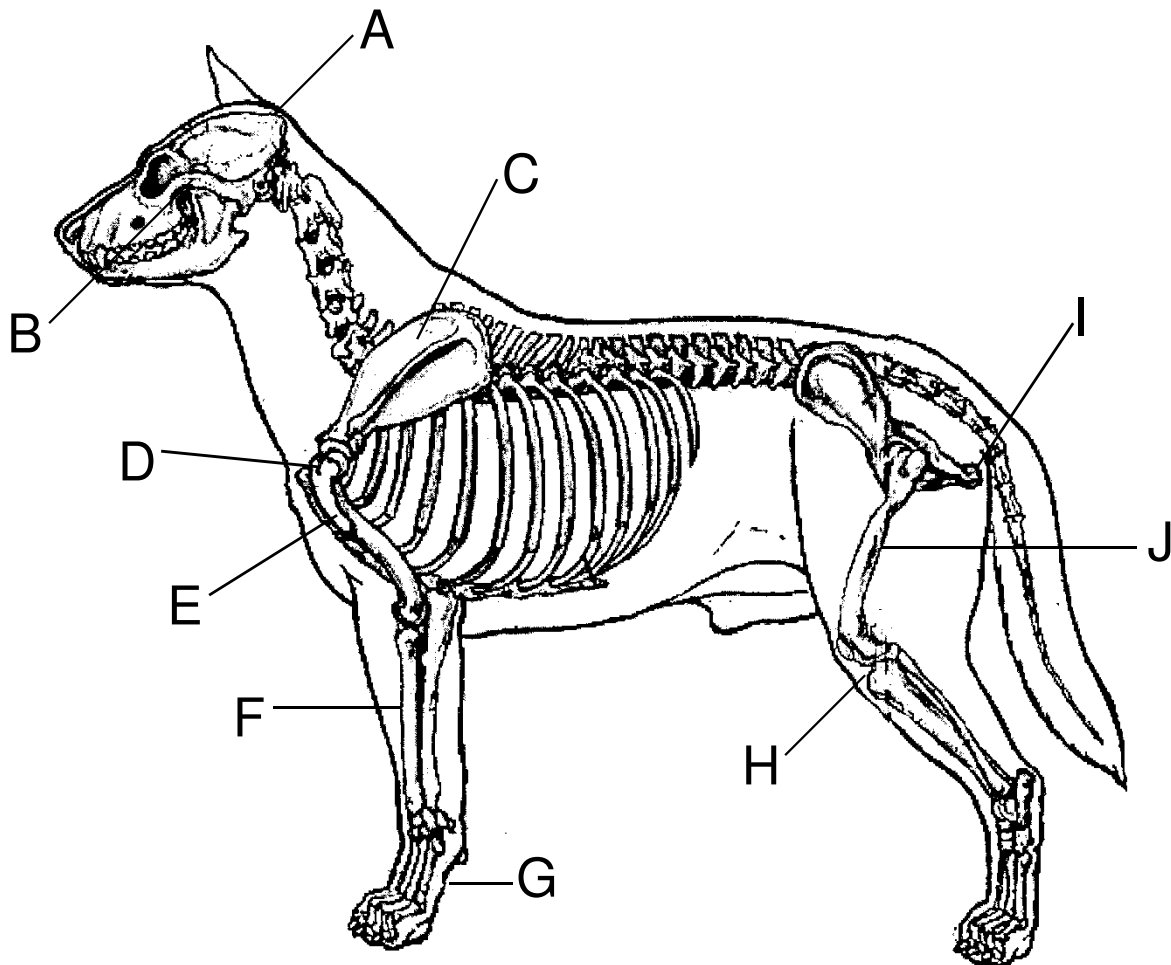


## PART II. – SKELETAL PARTS

---

Place the letter of the corresponding area next to the term that identifies it.

1. Point of Shoulder \_\_\_\_\_
2. Femur \_\_\_\_\_
3. Humerus or Upper Arm \_\_\_\_\_
4. Scapula or Shoulder \_\_\_\_\_
5. Ischial Tuberosity \_\_\_\_\_
6. Stifle or Knee \_\_\_\_\_
7. Metacarpus or Pastern \_\_\_\_\_
8. Zygomatic Arch \_\_\_\_\_
9. Radius or Forearm \_\_\_\_\_
10. Occiput \_\_\_\_\_



### **PART III. – MULTIPLE CHOICE**

---

1. What is the distribution of teeth in the normal canine?
  - a. 20 upper jaw, 22 lower jaw
  - b. 22 upper jaw, 22 lower jaw
  - c. 21 upper jaw, 21 lower jaw
  - d. 22 upper jaw, 20 lower jaw
  
2. The formation of the scapula and the humerus is referred to as:
  - a. patella
  - b. radius
  - c. point of shoulder
  - d. withers
  
3. The joint of the hind leg between the thigh and the second thigh; the dog's knee is referred to as:
  - a. the stifle
  - b. the hock
  - c. the point of rump
  - d. the pastern
  
4. The step up from the muzzle to the back skull: indentation between the eyes where the nasal bones and cranium meet is the:
  - a. occiput
  - b. stop
  - c. zygomatic arch
  - d. atlas
  
5. The region defined by the dorsal portions of the spinous processes of the first two thoracic vertebrae and flanked by the uppermost portion of the scapulae:
  - a. humerus
  - b. axis
  - c. withers
  - d. zygomatic arch
  
6. "Coupling" refers to:
  - a. the ribs
  - b. the loins
  - c. the upper arms
  - d. the hocks
  
7. Hocks turning in accompanied by toeing out of the rear feet is referred to as:
  - a. sickle hocked
  - b. cow - hocked
  - c. hucklebones
  - d. coupling
  
8. Which of the following describes a type of bite?
  - a. undershot
  - b. level
  - c. scissors
  - d. all of the above
  
9. "Head planes" refers to:
  - a. contours of skull and muzzle in profile
  - b. relative length of skull and muzzle
  - c. contours of skull and muzzle from front view
  - d. must be parallel
  
10. The combined contours of the brisket and the abdominal floor is referred to as:
  - a. topline
  - b. underline
  - c. balance
  - d. tuck-up

## PART IV. – MATCHING DEFINITIONS

Place the letter of the term that matches the definition.

1. \_\_\_\_\_ The part of the hindquarters from the stifle to the hock.
2. \_\_\_\_\_ The dorsal, posterior point of the skull.
3. \_\_\_\_\_ Well-angulated shoulders.
4. \_\_\_\_\_ Loose, folding skin on forehead and foreface
5. \_\_\_\_\_ Loose, pendulous skin under the throat and neck.
6. \_\_\_\_\_ Correct balance between various parts of the body.
7. \_\_\_\_\_ A part of chest assembly in front of the forelegs.
8. \_\_\_\_\_ The seven vertebrae of the neck.
9. \_\_\_\_\_ The fleshy regions at the sides of the head.
10. \_\_\_\_\_ Short bodied, compact.
11. \_\_\_\_\_ The region of the pelvic girdle, formed by the sacrum and surrounding tissue.
12. \_\_\_\_\_ A dog that has one testicle retained or hidden in its abdominal cavity.
13. \_\_\_\_\_ The pendulous lateral part of the upper lip, particularly at the inner corners.
14. \_\_\_\_\_ A lateral gait that tends to promote a rolling motion of the body. The left foreleg and left hind leg advance in unison, then the right foreleg and the right hind leg.
15. \_\_\_\_\_ The side of the body between the last rib and the hip; the coupling.
16. \_\_\_\_\_ A slight indentation of the median line down the center of the skull to the stop.
17. \_\_\_\_\_ The anatomical section between the fore and hindquarters.
18. \_\_\_\_\_ An asymmetrical alignment of upper and lower jaws; cross bite.
19. \_\_\_\_\_ The six upper and six lower front teeth between the canines.
20. \_\_\_\_\_ A partially unpigmented nose: dark, spotted with flesh color.

- A. *well proportioned*
- B. *dewlap*
- C. *flank*
- D. *wrinkle*
- E. *wry mouth*
- F. *forechest*
- G. *second thigh*
- H. *flew*
- I. *butterfly nose*
- J. *cervical vertebrae*
- K. *cheeks*
- L. *incisors*
- M. *well laid back*
- N. *cobby*
- O. *furrow*
- P. *croup*
- Q. *body*
- R. *occiput*
- S. *monorchid*
- T. *pacing*

# FSS OPEN SHOW ANATOMY TEST ANSWER SHEET

Name: \_\_\_\_\_

Date: \_\_\_\_\_

Enter your name, and the date above. Using pen *or* pencil please **SHADE** in the box for the correct answer.

\*Please mail in just the answer sheet or email to [ixm@akc.org](mailto:ixm@akc.org).

September 2013

## PART I – Answers

1.	A	B	C	D	E	F	G	H	I	J
2.	A	B	C	D	E	F	G	H	I	J
3.	A	B	C	D	E	F	G	H	I	J
4.	A	B	C	D	E	F	G	H	I	J
5.	A	B	C	D	E	F	G	H	I	J
6.	A	B	C	D	E	F	G	H	I	J
7.	A	B	C	D	E	F	G	H	I	J
8.	A	B	C	D	E	F	G	H	I	J
9.	A	B	C	D	E	F	G	H	I	J
10.	A	B	C	D	E	F	G	H	I	J

## PART III – Answers

1.	A	B	C	D
2.	A	B	C	D
3.	A	B	C	D
4.	A	B	C	D
5.	A	B	C	D
6.	A	B	C	D
7.	A	B	C	D
8.	A	B	C	D
9.	A	B	C	D
10.	A	B	C	D

## PART II – Answers

1.	A	B	C	D	E	F	G	H	I	J
2.	A	B	C	D	E	F	G	H	I	J
3.	A	B	C	D	E	F	G	H	I	J
4.	A	B	C	D	E	F	G	H	I	J
5.	A	B	C	D	E	F	G	H	I	J
6.	A	B	C	D	E	F	G	H	I	J
7.	A	B	C	D	E	F	G	H	I	J
8.	A	B	C	D	E	F	G	H	I	J
9.	A	B	C	D	E	F	G	H	I	J
10.	A	B	C	D	E	F	G	H	I	J

1.	A	B	C	D	E	F	G	H	I	J	K	L	M	N	O	P	Q	R	S	T
2.	A	B	C	D	E	F	G	H	I	J	K	L	M	N	O	P	Q	R	S	T
3.	A	B	C	D	E	F	G	H	I	J	K	L	M	N	O	P	Q	R	S	T
4.	A	B	C	D	E	F	G	H	I	J	K	L	M	N	O	P	Q	R	S	T
5.	A	B	C	D	E	F	G	H	I	J	K	L	M	N	O	P	Q	R	S	T
6.	A	B	C	D	E	F	G	H	I	J	K	L	M	N	O	P	Q	R	S	T
7.	A	B	C	D	E	F	G	H	I	J	K	L	M	N	O	P	Q	R	S	T
8.	A	B	C	D	E	F	G	H	I	J	K	L	M	N	O	P	Q	R	S	T
9.	A	B	C	D	E	F	G	H	I	J	K	L	M	N	O	P	Q	R	S	T
10.	A	B	C	D	E	F	G	H	I	J	K	L	M	N	O	P	Q	R	S	T
11.	A	B	C	D	E	F	G	H	I	J	K	L	M	N	O	P	Q	R	S	T
12.	A	B	C	D	E	F	G	H	I	J	K	L	M	N	O	P	Q	R	S	T
13.	A	B	C	D	E	F	G	H	I	J	K	L	M	N	O	P	Q	R	S	T
14.	A	B	C	D	E	F	G	H	I	J	K	L	M	N	O	P	Q	R	S	T
15.	A	B	C	D	E	F	G	H	I	J	K	L	M	N	O	P	Q	R	S	T
16.	A	B	C	D	E	F	G	H	I	J	K	L	M	N	O	P	Q	R	S	T
17.	A	B	C	D	E	F	G	H	I	J	K	L	M	N	O	P	Q	R	S	T
18.	A	B	C	D	E	F	G	H	I	J	K	L	M	N	O	P	Q	R	S	T
19.	A	B	C	D	E	F	G	H	I	J	K	L	M	N	O	P	Q	R	S	T
20.	A	B	C	D	E	F	G	H	I	J	K	L	M	N	O	P	Q	R	S	